

5-in-1 Universal
High Voltage
and Diagnostic
Testing System

HVA 28 / HVA 28 - TD

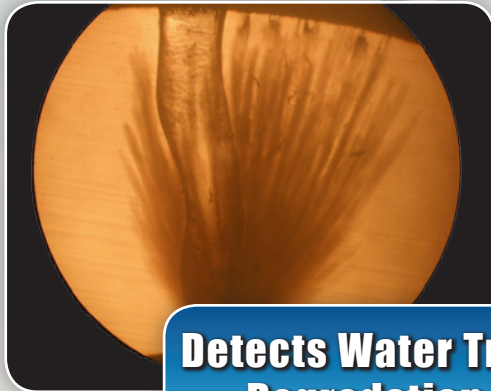
smart VLF™



The smallest
VLF & TD unit
available!
14 kg / 31 lbs

VLF Jacket
DC Tan Delta
Fault Conditioning

With
Intergrated
Tan Delta!



Detects Water Tree
Degredation



smart VLF™

HVA28 / HVA28-TD

Technical Data

| Model | | HVA28 | HVA28-TD |
|-----------------------------------|--------------|--|------------------------|
| Ordering Information | | 702 001 | 702 003 |
| Input Voltage | | 100 - 240 V, 50/60Hz (400 VA) | |
| Output Voltage | Sinusoidal | 0 - 30kV peak / 21kV rms | |
| | DC | ± 0 - 28 kV | |
| | Squarewave | 28 kV | |
| | Accuracy | ±1% | |
| | Resolution | 0.1 kV | |
| Output Current | | 0 - 20 mA (Resolution 1 µA) Accuracy: ± 1% | |
| Resistance Range | | 0.1 MΩ ... 5GΩ | |
| VLF Output Frequency | | 0.01 ... 0.1Hz in steps of 0.01 Hz (default 0.1 Hz) - auto frequency selection | |
| Output Load | | 0.5 µF @ 0.1 Hz @ 20kV rms 5.0 µF @ 0.01 @ 20kV rms 10.0 µF maximum capacitance* | |
| Output Models | | AC (VLF) Symmetrical and load independent across full range, DC (positive or negative polarity), Burn -/ Fault Condition or Fault Trip Mode, Jacket/Sheath Testing | |
| Sheath Test/Sheath Fault Location | kV | 0 - 10 kV | |
| | Trip Current | 0.1 - 5 mA | |
| | Pulse/Period | Variable | |
| Safety | | 50 / 60 Hz - 12 kV Feedback Protection/ Dual Discharge Device (internal) | |
| Memory | | 50 Test Records Stored (internal) | |
| Metering | | Voltage and Current (True rms and / or peak), Tan Delta, Capacitance, Resistance, Time, Flashover Voltage | |
| Tan Delta measurement resolution | | — | ± 1 x 10 ⁻⁴ |
| Duty Cycle | | Continuous! | |
| HV Cable | | 5m/16.5ft with Alligator clamps | |
| Software | | "HVA Control Center" | "TD Control Center" |
| Computer Interfaces | Bluetooth | Standard | |
| | USB | Standard | |
| Environmental Conditions | | Storage: -25°C to +75°C / -13°F to 167°F Operating: -5°C to 45°C / 23°F to 113°F | |
| Dimensions L x W x H | | 430 x 240 x 340 mm / 16.9 x 9.4 x 13.4 inches | |
| Weight | | 14 kg / 31 lbs | |
| Upgrades (Optional) | | Partial Discharge Diagnostic System PD30E | |
| | | Rugged Transport Case for HVA28/TD and all accessories. Part # 702 005 | |

*At lower frequency and voltage



Optional Transport Case



PD30E

Note: Due to continuous development, the information detailed in this document may change without notice.