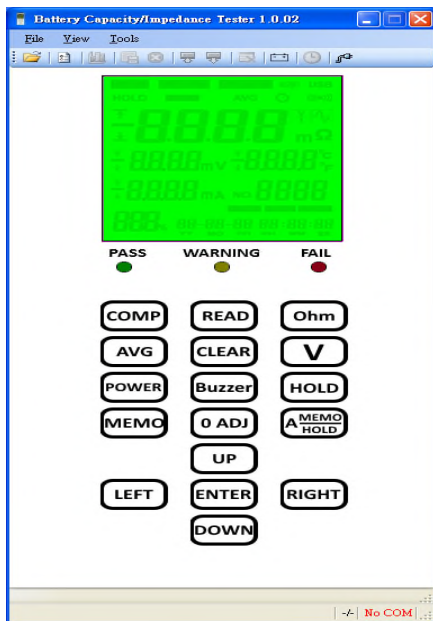


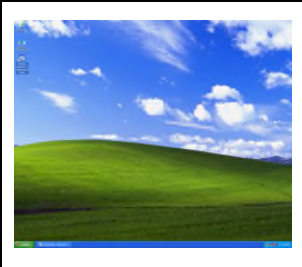
# Battery Impedance Tester Software User's Manual




## Table of Contents

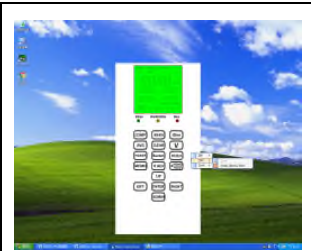
1	Initial Screen .....	1
2	Toolbar Description .....	4
3	Setup the date and time of the tester .....	5
4	Download Record to PC / Clear Record data.....	6

# 1 Initial Screen



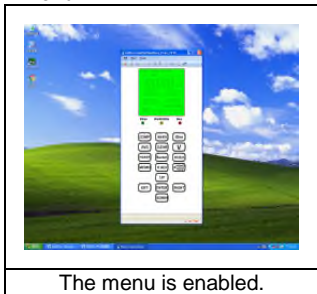
Open PC connection software

1. Move the mouse pointer to the  above icon and click it twice with the left button.

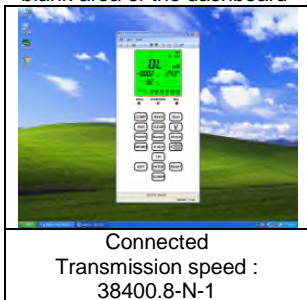



The menu hasn't be enabled yet.

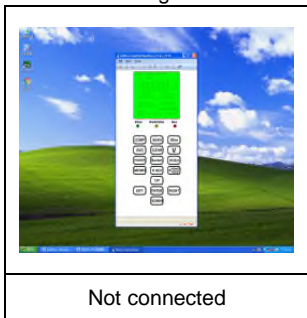
2. Move the mouse pointer to the blank area of the dashboard and press the right button of the mouse to select "☐ Graphic Window Mode" which is built under "View". Then click the block with  $\sim$  to enable the menu.



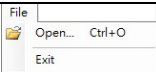

3. Move the mouse pointer to the blank area of the dashboard













4. If the connection fails, just  
press the reconnect button   
on the menu again.



## 2 Toolbar Description

	<p><b>File</b> Open a File Exit the Program</p>
	<p><b>View</b> Graph Hide Quick Toolbar</p>



	Open a File		Download record data (local)
	Sampling time of record (PC)		Upload record data to (local)
	Graphical interface		Clear local record data
	Enable record (PC)		Synchronize PC time
	Stop recording (PC)		Reconnect (Local)

2016/1/6 14:51:51	Local time
50/9999	Number of logs / Total number of logs
COM3	Port location (auto detection)





To download the record data to local, press this button  to download the record data.


Date	City	Station	State	Elevation	Altitude	UT	Volume	Volume	Capacity	Units	Date
2010/1/1	...	...	...	...	...	...	...	...	...	...	...
2010/1/2	...	...	...	...	...	...	...	...	...	...	...
2010/1/3	...	...	...	...	...	...	...	...	...	...	...
2010/1/4	...	...	...	...	...	...	...	...	...	...	...
2010/1/5	...	...	...	...	...	...	...	...	...	...	...
2010/1/6	...	...	...	...	...	...	...	...	...	...	...
2010/1/7	...	...	...	...	...	...	...	...	...	...	...
2010/1/8	...	...	...	...	...	...	...	...	...	...	...
2010/1/9	...	...	...	...	...	...	...	...	...	...	...
2010/1/10	...	...	...	...	...	...	...	...	...	...	...
2010/1/11	...	...	...	...	...	...	...	...	...	...	...
2010/1/12	...	...	...	...	...	...	...	...	...	...	...
2010/1/13	...	...	...	...	...	...	...	...	...	...	...
2010/1/14	...	...	...	...	...	...	...	...	...	...	...
2010/1/15	...	...	...	...	...	...	...	...	...	...	...
2010/1/16	...	...	...	...	...	...	...	...	...	...	...
2010/1/17	...	...	...	...	...	...	...	...	...	...	...
2010/1/18	...	...	...	...	...	...	...	...	...	...	...
2010/1/19	...	...	...	...	...	...	...	...	...	...	...
2010/1/20	...	...	...	...	...	...	...	...	...	...	...
2010/1/21	...	...	...	...	...	...	...	...	...	...	...
2010/1/22	...	...	...	...	...	...	...	...	...	...	...
2010/1/23	...	...	...	...	...	...	...	...	...	...	...
2010/1/24	...	...	...	...	...	...	...	...	...	...	...
2010/1/25	...	...	...	...	...	...	...	...	...	...	...
2010/1/26	...	...	...	...	...	...	...	...	...	...	...
2010/1/27	...	...	...	...	...	...	...	...	...	...	...
2010/1/28	...	...	...	...	...	...	...	...	...	...	...
2010/1/29	...	...	...	...	...	...	...	...	...	...	...
2010/1/30	...	...	...	...	...	...	...	...	...	...	...
2010/1/31	...	...	...	...	...	...	...	...	...	...	...

Click  to save the file (\*.csv). Data can be graphically presented with .

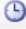


Use  to zoom in or zoom out for viewing the details of the graph, or use the preset magnification (x8 max.) for viewing.


Use  to adjust lines, viewing colors, as well as upper and lower limits.

Use  to restore as table presenting.

### 3 Setup the date and time of the tester

	<ol style="list-style-type: none"> <li>1. Click  with the mouse to setup the date and time of the tester.</li> <li>2. Modify the date and time.</li> <li>3. If you want to synchronize with the PC, enable the function <input checked="" type="checkbox"/> Synchronize with PC.</li> </ol> <p>Click <input type="button" value="Apply"/> and <input type="button" value="OK"/> with the mouse.</p>
--	--

## 4 Download Record to PC / Clear Record data

	<ol style="list-style-type: none"> <li>1. Click  and then click the ok button with the mouse to clear all the record data on the tester. At the moment, the "number of logs" is reset to zero.</li> </ol>



