



RAPID-TECH EQUIPMENT

For all your Test Equipment Requirements

ABN: 68 168 683 403
1300 Ferntree Gully Road
Scoresby VIC 3179

Phone: 1800 358 531 Fax: 03 9753 2132
Email: info@rapid-tech.com.au Web: www.rapid-tech.com.au



INTRODUCING THE FLIR E4, E5, E6 AND E8 INFRARED CAMERAS WITH MSX®

MSX® Thermal Image Enhancement

MSX adds key details from the onboard visible light camera to the entire infrared image in real time. The result: an all-in-one thermal picture with numbers, labels, and other structural features intact so you'll instantly recognize where the heat issue is.

Affordable Resolution Choices

From the 4800-pixel thermal image clarity of the E4 to the E8's incredible 320x240 detector with 76,800 pixels, FLIR Ex-Series cameras offer a resolution to fit the target size, working distance, and detail required for your application as well as your budget.

The Power of One Button

A focus-free lens and simple button navigation to on-screen settings, imaging modes, measurement tools, and saved JPEGs make all four of these cameras amazingly easy to operate, even with just the press of a single gloved thumb.

Removable Battery

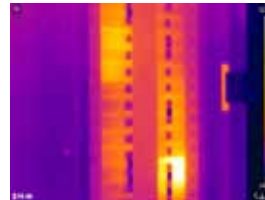
Quick-release, tool-type Li-ion battery is easy to remove, recharge and snap back in. Charge in-camera or with the optional charging station to keep you up and running all day.

Fast Temperature Measurement Tools

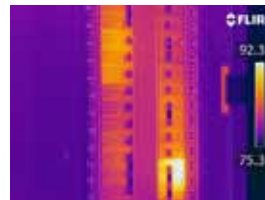
The E4 on up feature an on-screen center spotmeter for measuring temperatures. The E5, E6, and E8 also give you an area box tool with an automatic hot or cold spot that hunts down temperature extremes. And the E6 and E8 provide a blue-below and red-above color alarm to quickly alert you to heat issues.

Multiple Imaging Modes

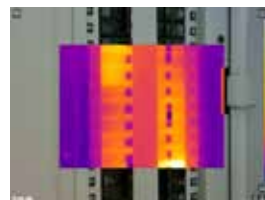
All Ex-Series cameras let you view thermal, visual, and MSX images and store them simultaneously for further analysis using FLIR Tools software. The E6 and E8 also offer Picture-in-Picture that inserts the thermal image over the visible photo as an extra documentation option.



Thermal only



Thermal with MSX



Picture in Picture



Mention this promotion and receive a free Flir Cap with any Flir order

Flir CM174 4 in 1 Thermal Imager, Clampmeter, Multimeter & Torch

NEW for 2016



Clampmeter: 600A AC/DC (with optional 3000A AC flexible jaw accessory for large current or hard to reach places)

Torch: Built in work light for making safe connections

Thermal Imager: -25°C to 150°C (Perfect for finding hot spots \ high resistance joints on switch boards with Laser pointer & Crosshair).

Multimeter: Resistance, Continuity, Frequency, Smart Diode Check, Capacitance, Low Impedance for finding ghost voltages & Variable speed drive filter

Safety: CAT-IV 600V rated to exceed the toughest safety standards.

Why spend more? Ask us for pricing!

FLIR DM92 True RMS Industrial Multimeter

- VFD Mode - Accurately analyze non-sinusoidal waveforms and noisy signals in VFD motors and drive controllers.
- LoZ Mode - Low Impedance Input filter to eliminate ghost voltage readings in long-run applications.
- Bright Dual LED Worklights - Make your work safer and easier by illuminating dimly lit inspection areas.
- Rugged, Shock-Resistant
- Double-molded rubber case
- No need to select AC or DC Mode for quick tests
- Backlight features user-configurable timeout
- Large, sharp display is easy to see
- Tool-less battery changing
- Built-in tilt stand



FLIR TA72 & TA74 Universal Flex Current Probe



The FLIR Universal Flex Current Probe accessories are designed to get the best readings with your existing meter. Made with a narrow flexible coil clamp, the TA72 and TA74 let you easily take measurements in tight or awkward spots — a difficult task with a traditional hard jaw clamp meter. The connection is a standard banana plug and the output is a voltage signal, so it's compatible with most DMMs and clamp meters, regardless of brand.

PROVA[®] Prova 11 AC/DC mA Clamp Meter



- Accurate AC/DC digital clamp meter for current measurements
- Resolution: AC 0.1mA, DC 1mA
- One touch zero for DC amps adjustment
- Jaw opening: 23mm diameter
- Large 3-3/4 digit Liquid Crystal Display
- Fast bargraph display for transient observation. Continuity and frequency measurements.
- Min/Max, and Data Hold functions
- Easy single rotary switch for any function selection
- 600 volt overload protection on Ohms range
- CAT II 600V, CAT III 300V

TENMARS

TM-190 Multi-Field EMF Meter

- 4 digits, 2.4 inches color TFT LCD.
- 3 measurements in one meter: Electromagnetic Field (3 - axis), Electric Field., RF Field Strength
- Data Hold (HOLD)
- Sample rate 6 seconds per time
- Audible Key tone alarm Buzzer
- Language Selection (choose your language): English; Traditional Chinese; Simplified Chinese; Japanese; Spanish
- Instrument can be linked to user's External Power Supply via USB mini-B (5-pin) port



REED

R3001 Digital Manometer / Anemometer

- Measure and display air velocity, air flow volume, pressure and ambient temperature with a single, compact unit
- Air velocity displayed in m/s, fpm, km/h, mph or knots
- Air flow displayed in cfm or cmm
- Pressure displayed in psi, mbar, inH2O, mmH2O or Pa
- Temperature displayed in °C or °F
- Max./Min./Avg. function captures extreme pulsating or varying pressure signals
- Real time clock provides for time-stamped measurements
- Push button calculation of rectangular or circular duct areas
- Large LCD display with backlight
- Auto power off and low battery indication
- USB interface



EXTECH[®] INSTRUMENTS

42509 Dual Laser IR Thermometer with Colour Alert

High/Low Alarms with Vision Alarm Function

- Fast and accurate measurements at 12" where the two lasers converge with 12:1 field of view
- Measures up to 950°F (510°C)
- Automatic blue backlit dual LCD display
- Red backlit display flashes when reading exceeds High or Low set points
- Exclusive 150 millisecond instantaneous response for capturing spikes in temperature
- Max mode captures and holds rapidly changing temperatures
- Adjustable emissivity increases measurement accuracy for different surfaces
- Adjustable High/Low set points with audible alarm alerts user when temperature exceeds the programmed set points
- Double molded housing



TENMARS

TM-209 LUX/FC LED Light Meter

- Spectral response close to CIE Luminous spectral efficiency
- Measuring intensities of illumination in Lux or Foot-candle
- Sensor : Silicon photo diode and filter
- Cosine angular corrected
- Data hold
- 99 manual records
- According to JISC 1609 : 1993 and CNS 5119 general A class specifications
- Check LED Light Intensity



Assorted Cases, Test Leads, Probes and Accessories



GW INSTEK

GDS 2000 Series Digital Storage Oscilloscope

- 300MHz/200MHz/100MHz/70MHz Bandwidth, 2 or 4 Input Channel
- 2GSa/s Real-time Sampling Rate and 100GSa/s Equivalent Time Sampling Rate
- 2Mega Points Record Length
- 1mV /div to 10V/div of Vertical Range
- 1ns/div to 100s/div of Time Base Range
- 80,000 wfm/s of Waveform Update Rate
- 8 inch 800*600 High Resolution TFT LCD Display
- Built-in Segmented Memory and Waveform Search Functions to Optimize the Efficiency of Record Length
- Zoom Window and Play/Pause can Rapidly Navigate the Waveforms
- 36 Automatic Measurement Functions Offers Various Measurement Selections
- Optional 8 or 16 digital channel with Logic analyzer (MSO)
- Optional Function Generator
- Flexible Remote Control Connectivity (Standard: USB ; Option: LAN/GPIB)
- Upgradable CAN/LIN bus analysis, Advanced Logic, Datalog, DVM and H-expansion functionalities



GW INSTEK

SPS Series Power Supplies

The SPS-Series are single output, 360W, switching DC power supply. OVP protects the SPS-Series and their load from unexpected conditions. High regulation is maintained at 0.01%. Remote sensing adds extra level of precision by compensating cable losses between loads. Turning the output On/Off from external device is available through remote control terminals. The SPS-Series are an ideal solution for power-efficient bench-top or portable applications requiring high regulation.

- Dual Measurement Display
- 0.01 % High Regulation
- Constant Voltage and Constant Current Operation
- High Efficiency
- High Power Density
- Over Voltage Protection
- Remote Output ON/OFF Control





RAPID-TECH EQUIPMENT

For all your Test Equipment Requirements

ABN: 68 168 683 403
 1300 Ferntree Gully Road
 Scoresby VIC 3179
 Phone: 1800 358 531 Fax: 03 9753 2132
 Email: info@rapid-tech.com.au Web: www.rapid-tech.com.au



HT PQA-820 WATERPROOF REMOTE DISPLAY WIFI ENABLED POWER ANALYSER

Turn your smartphone or tablet into the most advanced power and energy consumption analyzer in the world.

3 system types: Single-phase, 3-wire Three-phase, 4-wire Three-phase.

Easy to set up directly from Smartphone or Tablet.

Technology and straightforwardness. Immediate display of all recordings and simple analysis thanks to rapid gestures and detailed zoom on all quantities.

Real Time. Instant display of all wave forms, harmonics, vector diagrams and summary function for a prompt reading of the most important parameters.

Energy saving. Discover absorption capacity of all your equipment with one click and save energy.

383 parameters which can be displayed simultaneously.

Jump function. Relation between time and frequency domains or between power and energy consumed available instantly. * Using HTanalysis App for iOS™ or Android™ on Tablet or Smartphone. The App can be downloaded for free on AppStore™ or Playstore™

Real time analysis. Using Wi-Fi connection you can display wave forms, vector diagrams, harmonics and all electrical parameters for each phase on your tablet/smartphone/PC.

Unlimited battery life. PQA820 is self-powered during recording.

IP65. Rain doesn't scare us. PQA820 is not afraid of the weather. Thanks to its heavy-duty and waterproof case the instrument is well protected and can be used in any environment.



Bonus Dual SIM Card Android Tablet Included

HT 7051 5kV INSULATION TESTER



- Insulation resistance measurement with test voltage up to 5kV
- Measurement range up to 10T ohm
- FIX mode with test voltage of 100, 250, 500, 1k, 2.5k, 5kVDC
- ADJUST mode with selectable voltage, 100 to 5kVDC
- RAMP mode with selectable duration time and test voltage
- Polarization Index (P.I.) measurement
- Dielectric Absorption Ratio (D.A.R) measurement
- DC/AC TRMS voltage up to 600V
- SMOOTH feature for stable measurement results
- GUARD lead for surface leakage current compensation
- MX, MIN limit selectable threshold on measurements
- Automatic discharging of device under test
- LCD display with backlight and bargraph
- Internal memory for saving results
- Recall saved results at display
- RS-232 interface for PC connection
- Rechargeable internal battery

HT COMBI 420 INSTALLATION TESTER

The **COMBI 420** is an innovative meter designed to perform all safety testing and verification of electrical installations in compliance to VDE0100 and BS7671 Standards. The instrument is very easy to use having a wide number of measurement ranges.

The use of a special remote probe is particularly useful as is the AUTO internal function when performing sequential measurements of Global Earth Resistance. A contextual 'help' selectable by user is available for each meter range function. The model can also save each test result inside memory and can transfer saved data to a PC through an optical/USB interface with dedicated Windows software.

- Continuity test with 200mA range
- Insulation measurement ranges 50, 100, 250, 500, 1000V
- Trip out time of RCD's type AC. (automatic and manual modes)
- Trip out current of RCD's. (automatic and manual modes)
- Loop Impedance P-P, P-N, P-PE
- Loop Impedance P-P, P-N, P-PE with high resolution
- 0.1mΩ using the IMP57 optional accessory
- Protective short circuit current
- Contact voltage
- Global Earth Resistance without tripping RCD's
- Phase sequence indication
- Power Measurement with optional HT96U Current Clamp
- AUTO function: Global Earth Resistance + RCD test + Insulation
- Make measurements remotely. (optional accessory PR400)
- Leakage current with optional HT96U Current Clamp
- Contextual 'HELP' at display for each function
- Internal memory
- Optical/USB interface with PC connection



HT 70 voltage detector and a phase sequence indicator.

- AC voltage range: 100V - 1000V to ground.
- Frequency range: 50/60Hz.
- LED red/green + buzzer for indication of test.
- Pocket clip.
- Safety: IEC/EN61010-1, CAT IV 1000V.
- Pollution degree: 2.
- Power supply: 2x1.5V batteries type AAA IECLR03.
- Battery life: >9000 tests.
- Size (LxWxH): 160 x 26 x 20mm.
- Weight (included batteries): 48g.
- Accessories: batteries + user manual.

Correct Phase Sequence



Incorrect Phase Sequence



HT 9021 CAT-IV AC/DC Clampmeter

- TRMS measurement
- DC/AC current up to 1000A
- DC/AC voltage up to 1000V
- "Voltsense" feature for AC voltage detection
- Resistance & Continuity test with buzzer
- Frequency with jaws and test leads
- Capacitance, Diode test & Duty Cycle
- Temperature with type K probe
- Autorange
- Data HOLD
- MAX/MIN/ZERO
- PEAK CURRENT (<10ms)
- Backlight
- Bargraph
- Model **HT9022** can measure and log Power



HT 701 Multimeter + Insulation Tester

- DC Voltage
- AC TRMS Voltage
- DC Current
- AC TRMS Current
- Insulation resistance with test voltages 50, 100, 250, 500, 1000
- Resistance, Continuity & Diode test
- Capacitance & Frequency
- Temperature with type K probes
- Data HOLD
- MIN/MAX/AVG
- Manual/Autorange
- Relative measurements
- Autotest for automatic detection of AC or DC parameters
- Bargraph, Autobacklight &
- Internal memory
- Fuse protection on inputs
- Auto Power OFF



HT 8100 Multimeter + Process calibrator

- DC/AC TRMS Voltage
- DC/AC TRMS Current
- AC+DC measurements
- Generation of output current signal up to 24mA DC
- Selection 0-20mA and 4-20mA output
- Up to 4 available automatic ramp
- Loop current measurement of external transducers
- 250 Ohm HART feature
- Simulating of external transducers
- Resistance
- Continuity & Diode test
- Frequency
- Data HOLD
- MIN/MAX/AVG
- Manual/Autorange
- Relative measurements
- Autotest for automatic detection of AC or DC
- Autobacklight, Internal memory & Auto Power OFF



Megger

MIT320 Insulation Tester

- 1000V, 500V, 250V test voltages
- Conforms to IEC 61010-1
- CAT-III 600V rated
- Extremely easy to use
- Tough rubber armoured case
- Self contained protective cover
- Live circuit warning
- Weatherproof to IP54
- 200mA continuity testing
- Insulation limit alarm
- Intelligent Safety System
- Backlit display and range selection
- Insulation resistance up to 999M ohms
- Resistance measurement range to 1 MΩ
- Switched probe supplied for one handed operation



KYORITSU

3132A Analogue Insulation / Continuity Tester

- Designed to meet IEC 61010-1 and IEC 61557 safety standard
- 1000V, 500V, 250V test voltages
- 3Ω/500Ω Continuity Ranges
- 1mA rated test current at the minimum resistance
- 200mA measuring current on continuity testing
- Automatic discharge of circuit capacitance
- (Any charge stored in the circuit under test will be automatically discharged after testing)
- Live circuit warning buzzer and neon lamp
- Small and lightweight. Shock resistant new case material
- AC voltmeter with linear, easy-to-read scale
- Operates on AA, R6 × 6 dry batteries



EXTECH

380363 Digital High Voltage Insulation Tester

Autoranging insulation measurements to 10MΩ plus manual datalogging

- 1000V, 500V, 250V test voltages
- Measure Insulation Resistance to 10G Ohm
- Large LCD display with analog bargraph
- Lo Ohm function for testing connections
- Automatic discharge of capacitive voltage charges
- AC/DC voltage measurement up to 999V
- Manual data record and read function (9 sets)
- Live circuit display warning and beeper



YOKOGAWA

Process Calibrator CA300 Series

The CA300 Series is a high accuracy source and measure portable handheld calibrator used to inspect and maintain the accuracy of control devices such as temperature controllers, temperature transmitters, temperature sensors and other process devices which are used in process plants, industry machinery, and manufacturing. Available in 3 models, the CA310, CA320, and CA330 provide an ergonomic and friendly user-interface making it easy to use.

